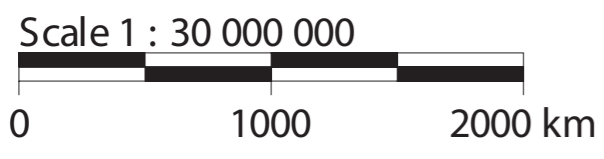
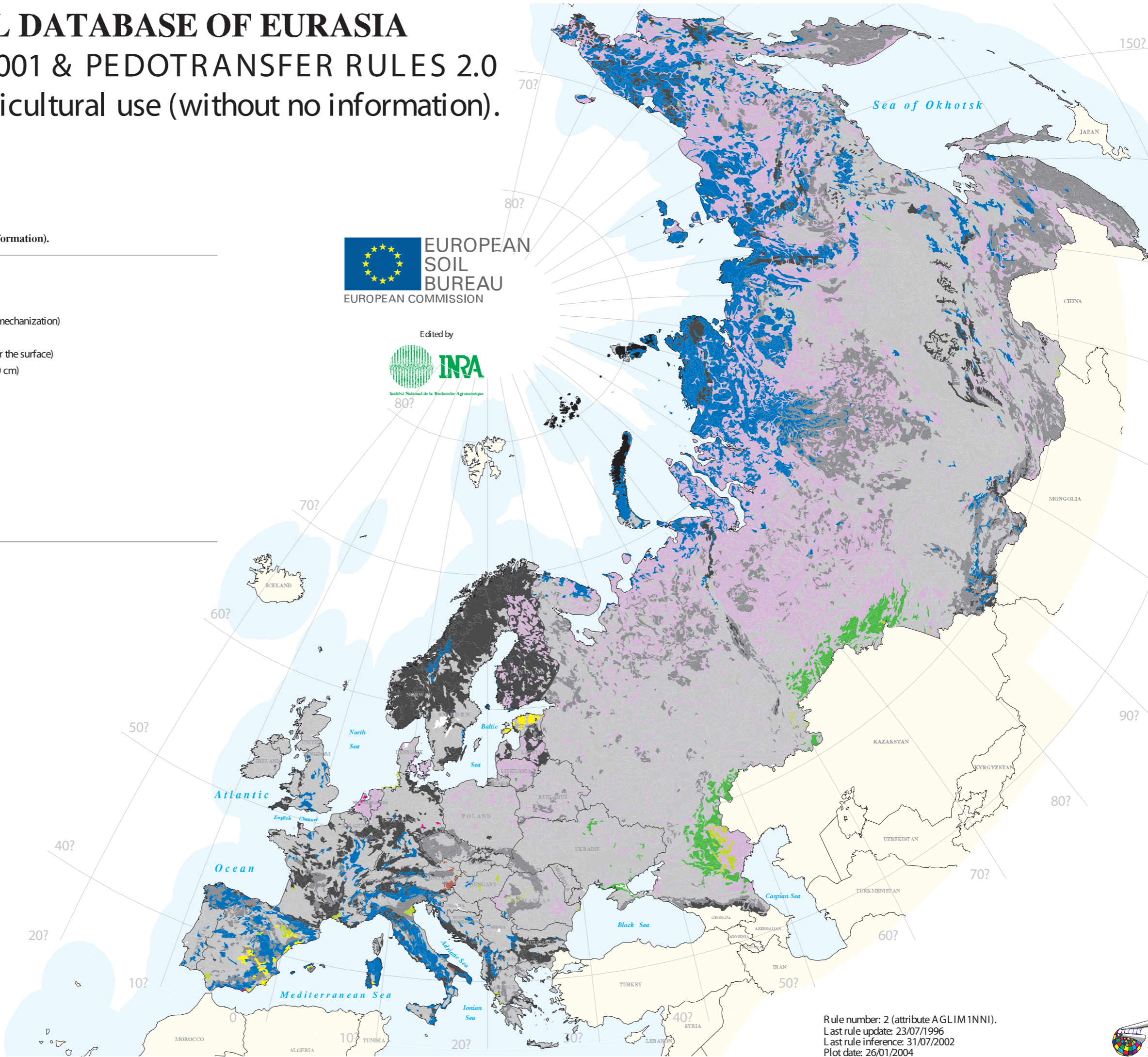


# SOIL GEOGRAPHICAL DATABASE OF EURASIA

VERSION 4 beta, 25/09/2001 & PEDOTRANSFER RULES 2.0

Dominant limitation to agricultural use (without no information).

% OF MAP:	Dominant limitation to agricultural use (without no information). (Attribute AGLIM1NNI):
1 %	No information
45 %	No limitation to agricultural use
13 %	Gravelly (over 35% gravels diameter < 7.5 cm)
8 %	Stony (presence of stones diameter > 7.5 cm, impracticable mechanization)
11 %	Lithic (coherent and hard rock within 50 cm)
1 %	Concretionary (over 35% concretions diameter < 7.5 cm near the surface)
1 %	Petrocalcic (cemented or indurated calcic horizon within 100 cm)
1 %	Saline (electric conductivity > 4 mS.cm <sup>-1</sup> within 100 cm)
2 %	Sodic (Na/T > 6% within 100 cm)
1 %	Glaciers and snow caps
1 %	Soils disturbed by man
24 %	Fragic
1 %	Drained
1 %	Quasi permanently flooded
1 %	Eroded phase, erosion
1 %	Phreatic phase
	Non soils



Rule number: 2 (attribute AGLIM1NNI).  
 Last rule update: 23/07/1996  
 Last rule inference: 31/07/2002  
 Plot date: 26/01/2004

