



WebGIS TURTLMANN TAL



Scale select 1:10000



Layers

- ▶ Maps
- ▶ Process Domain
- ▶ Surface Material
- ▶ Glaciology/Hydrology
- ▶ Geomorphography
- ▶ Moraine Ridges
- ▶ Singular Landforms
- ▶ Geomorphologic Processes
- ▶ Rockglaciers
- ▶ Geophysical Applications
- ▶ Contour lines

Print

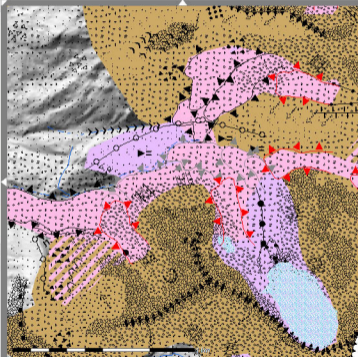
WMS export



Research Training
Group 37

LANDFORM

Imprint / Info



Legend ON/OFF ☒

Process Domain

gravitational

dyogenic

glacial

dyogeniogravitational

Surface Material

surface material

Sand/Silt/Clay

Pebbles

Gravel

Boulders

Bedrock

Glaciology/Hydrology

Glacier/perennial snow patch

Stream (perennial)

Stream (intermittent)

Geomorphography

Geomorphography