

Preparations of the IPY 2007-2008 in Poland

Jacek JANIA,
and
Piotr GŁOWACKI



**Polish National Committee
on IPY 2007-2008**

Polish Academy of Sciences
(Prof. A. Guterch – Chair)

Committee on Polar Research

Polish Academy of Sciences
(Prof. A. Guterch – President)

Committee for Preparation of the IPY
Conference of Rectors of the Polish Universities
(Prof. J. Jania – Chair)

Polar Stations
and
Vessels

Scientific
Institutions

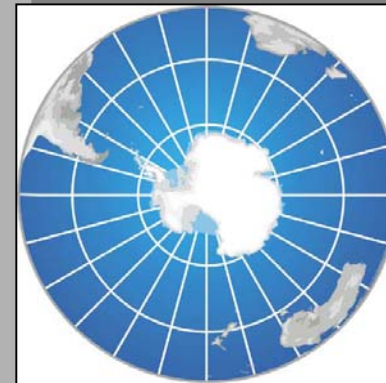
Universities

**COMMITTEE ON POLAR RESEARCH
POLISH ACADEMY OF SCIENCES**

**Project for preparation of the Polish scientific institutions
for activity during 4 IPY 2007-2008**

**STRUCTURE, EVOLUTION AND DYNAMICS OF
THE LITOSPHERE, CRYOSPHERE AND
BIOSPHERE OF
ARCTIC AND ANTARCTIC REGIONS**

*Supported by the State Committee for Science Research
in 2004-2006*



Warszawa, February 2004

1 International Geophysical Year 1882/1883
(Polish political prisoners to Siberia
exploring the Arctic)

2 Polar Year 1932/1933
(Polish Expedition to Bear Island)

3 International Geophysical Year 1957/1958
(Polish Expedition to Hornsund established
Polish Polar Station in Spitsbergen)

 **4 International Polar Year 2007/2008** 



?



Currently studied areas
in the Arctic

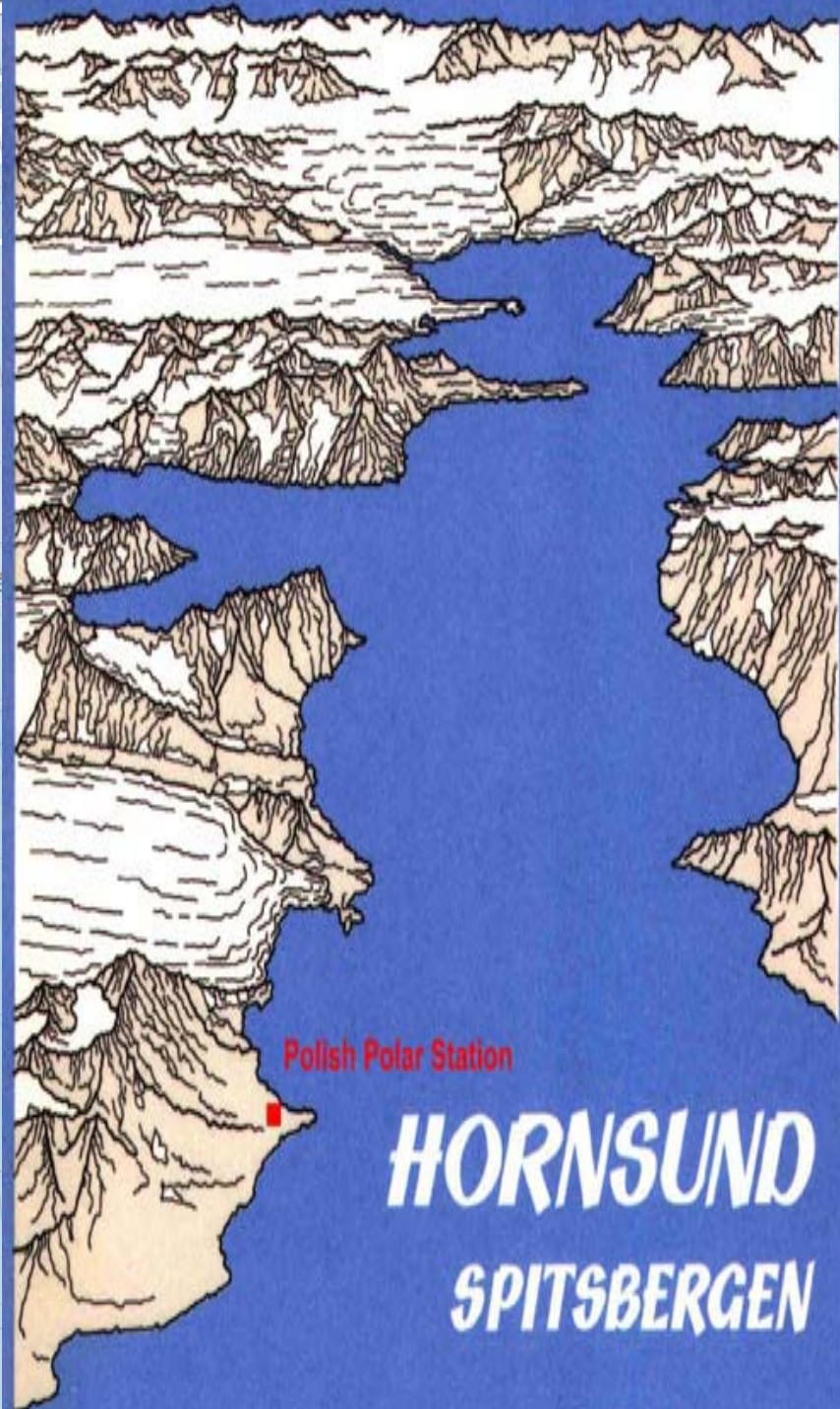
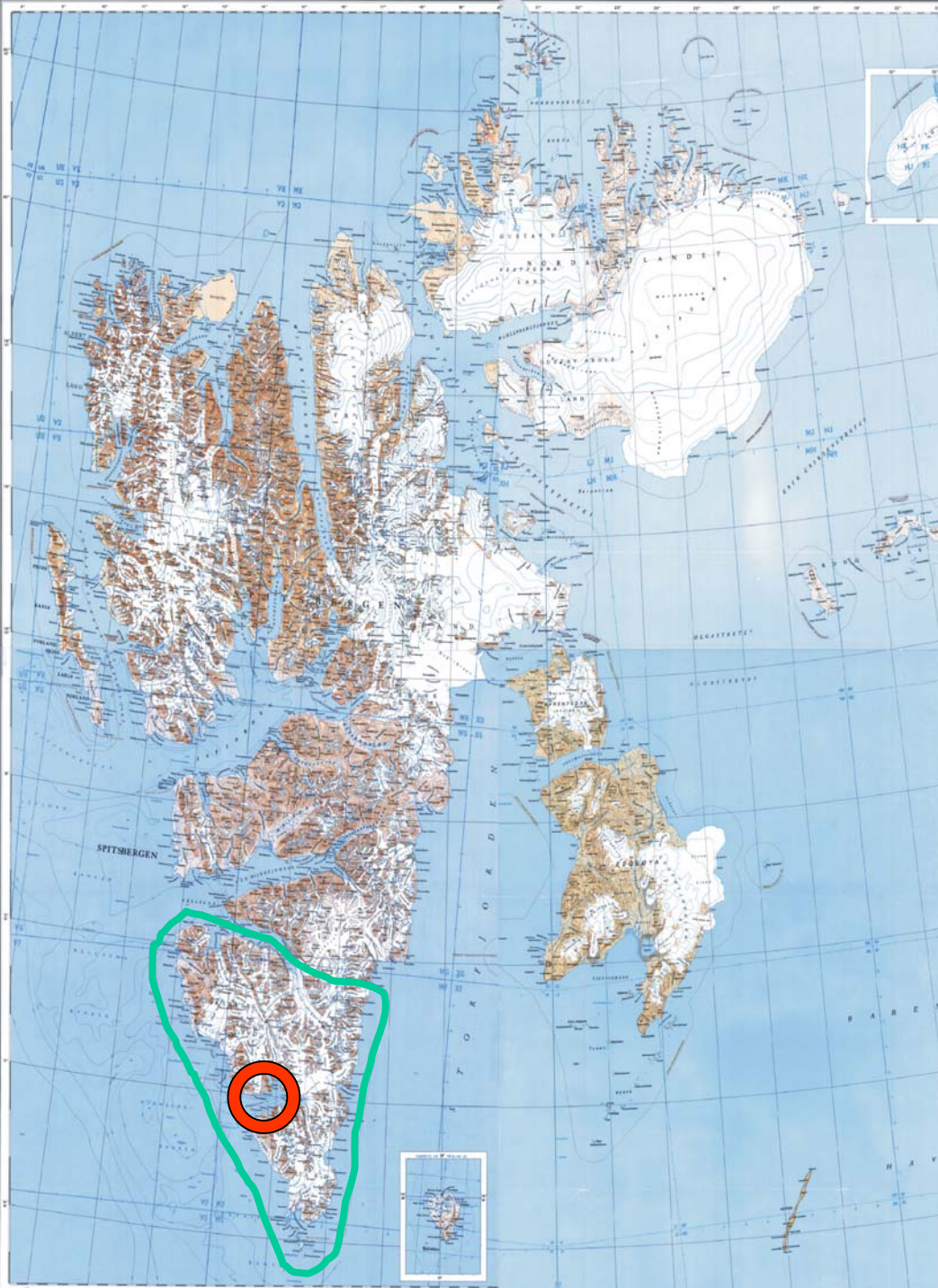
○ Irkutsk
(& Siberia)

Kola
Peninsula

Spitsbergen

Iceland

Poland





1958







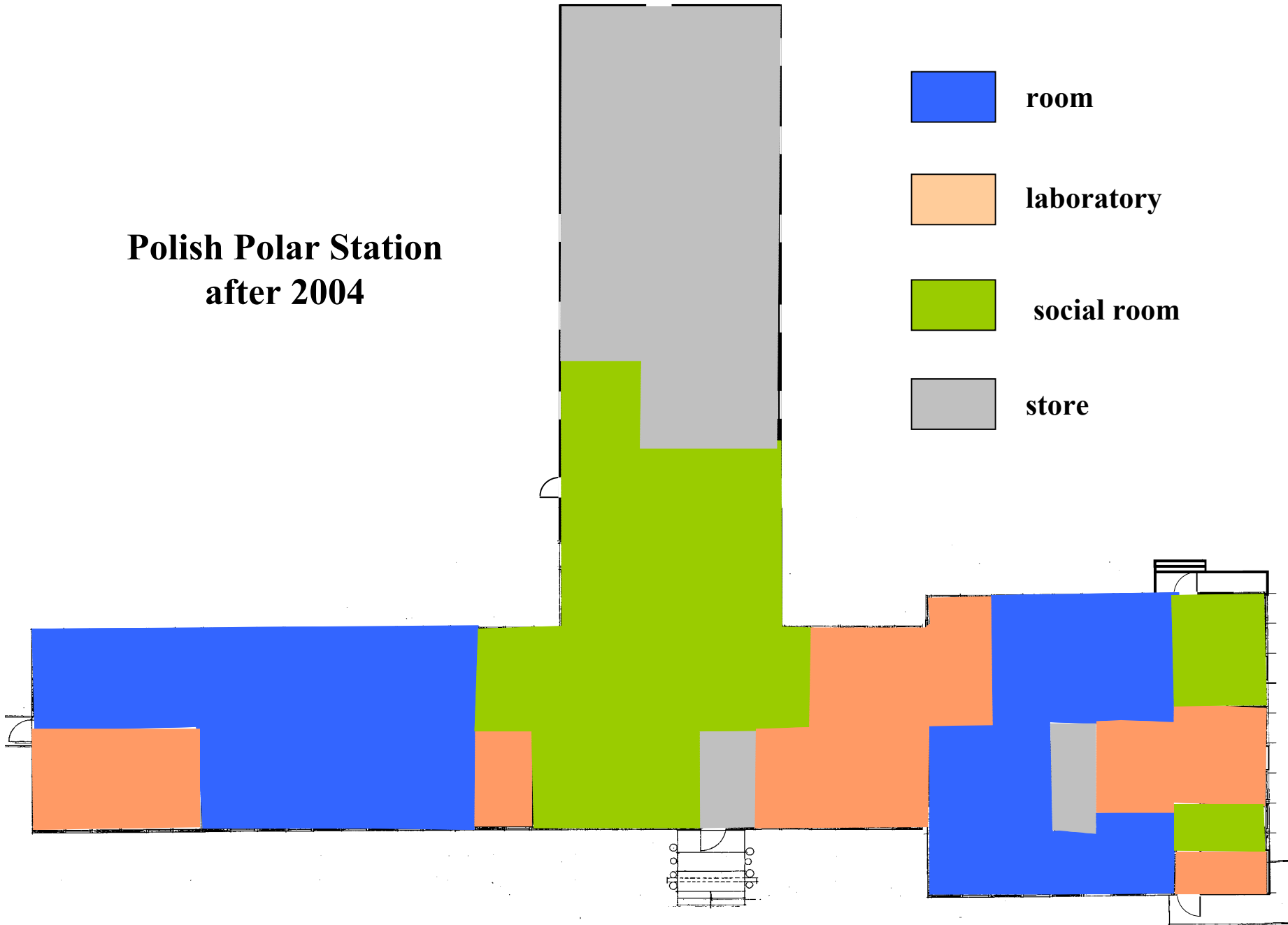
1980



2003

Polish Polar Station after 2004

-  room
-  laboratory
-  social room
-  store



Polish Polar Station at Hornsund (Svalbard)

Facilities:

- Single bedrooms – 12
- Larger bedrooms – 7
- (30 places for seasonal groups)
- Laboratories – 10
- Kitchen
- Dining room
- Meeting room
- Bathrooms – 3
- W.C. – 4
- Garage and workshop
- Snow mobiles – 5
- Open boats – 2
- Zodiacs – 2
- Amphibians – 2
- Environmental pavilion – 1
- Geophysical pavilions – 2







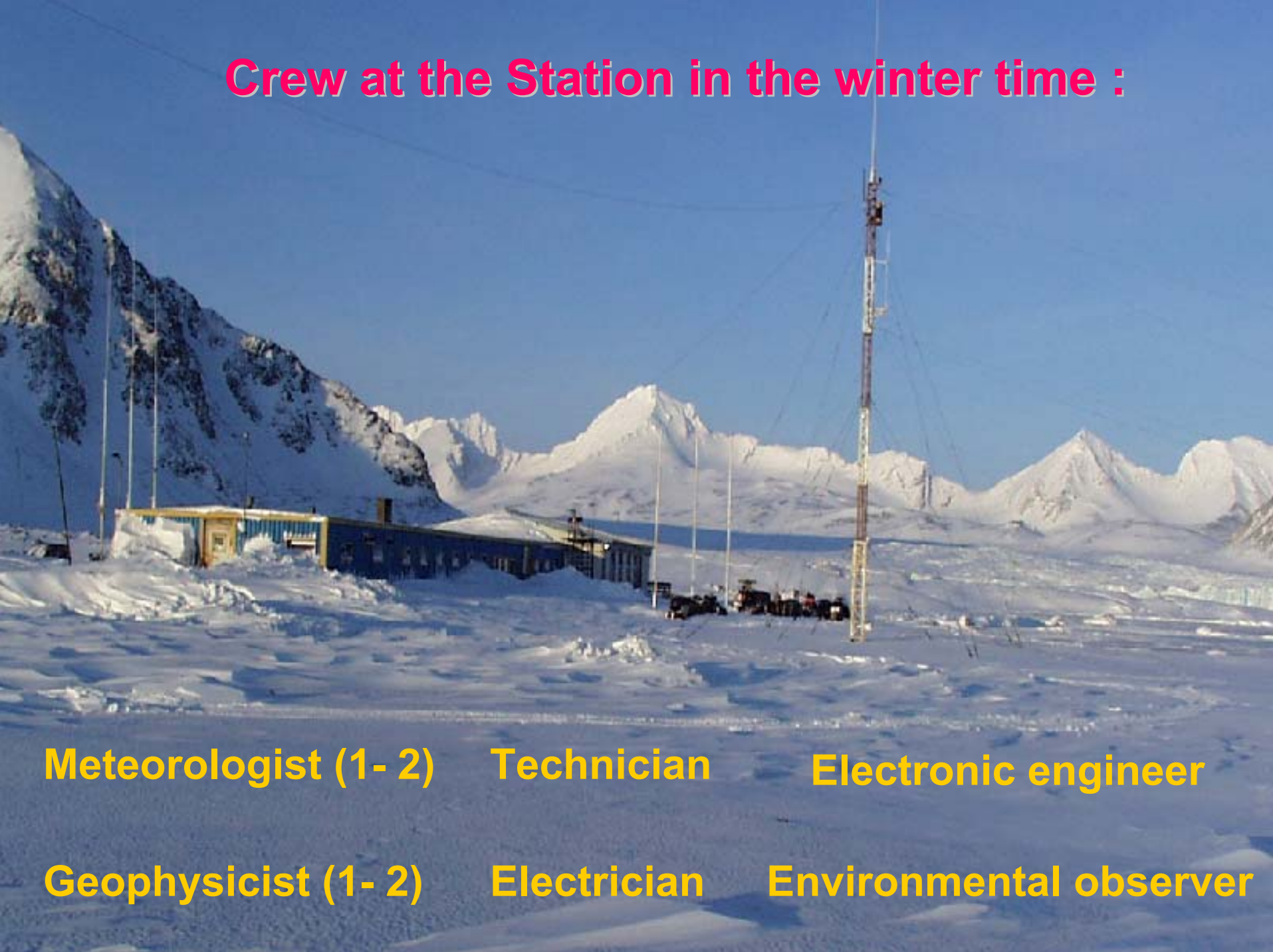
Hans Glacier in 1957 and in 2003





2002 9 27

Crew at the Station in the winter time :



Meteorologist (1- 2)

Technician

Electronic engineer

Geophysicist (1- 2)

Electrician

Environmental observer

The current research programmes:

- **Structure of the Earth's crust by seismic methods**
- **Geophysical fields**
- **Terrestrial cryosphere**
 - **permafrost**
(active layer thickness; physical and chemical processes)
 - **glaciology**
glacier geometry changes,
glacier dynamics (tidewater glaciers)
hydro-thermal structure of glaciers
 - **snow cover on glaciers and land**
snow chemistry
snow thickness distribution
- **Climate changes and related processes**
- **Marine and terrestrial ecology**

Svalbard – Hornsund area



European Marine Biodiversity Flagship Site





A satellite photograph of the Arctic region, showing the Barents Sea and the Greenland Sea. The image is characterized by a vast expanse of light blue and white, representing sea ice and snow-covered land. The Barents Sea is located in the upper left, and the Greenland Sea is in the lower left. A red arrow points from the Barents Sea towards the upper right, and another red arrow points from the Greenland Sea towards the lower right.

Barents Sea

Greenland Sea



Thank you

